

Broward County Fenestration Voluntary Wind Load Chart*

Per ASCE 7-10 Method 1, Part 1 and FBC (2017) for Retrofitting in Accordance with Formal Interpretation #5

For Detached One-and Two family dwellings and Multiple Single-Family Dwellings (Townhouses) with Mean Roof Height ≤ 30 feet

Wind 170 mph (3-second gust) / Exposure C** / Kd = 0.85 / Kzt = 1.0 / Pressures are in PSF / Not for use in Coastal (Exposure 'D' areas)

* Using Allowable Stress Design methodology (P = 0.6w) / ** Exposure shall be determined according to ASCE 7-10 Section 26.7.3 (Exposure Categories)

Effective Wind Area (ft ²)	Location: Gable or Hip Roof	Mean Roof Height of 15 feet						Mean Roof Height of 20 feet						Mean Roof Height of 25 feet						Mean Roof Height of 30 feet					
		Zone						Zone						Zone						Zone					
		1		2		3		1		2		3		1		2		3		1		2		3	
		+	-	+	-	+	-	+	-	+	-	+	-	+	-	+	-	+	-	+	-	+	-	+	-
10	Gable/Hip Roof θ ≤ 7° (0 to 1.5:12)	16.0	-37.8	16.0	-63.4	16.0	-95.4	16.3	-40.2	16.3	-67.4	16.3	-101.4	17.1	-42.1	17.1	-70.6	17.1	-106.3	17.8	-43.7	17.8	-73.4	17.8	-110.4
20		16.0	-36.8	16.0	-56.7	16.0	-79.1	16.0	-39.1	16.0	-60.2	16.0	-84.0	16.0	-41.0	16.0	-63.1	16.0	-88.0	16.7	-42.6	16.7	-65.6	16.7	-91.5
50		16.0	-35.6	16.0	-47.7	16.0	-57.4	16.0	-37.8	16.0	-50.7	16.0	-61.0	16.0	-39.6	16.0	-53.2	16.0	-63.9	16.0	-41.1	16.0	-55.2	16.0	-66.4
100		16.0	-34.6	16.0	-41.0	16.0	-41.0	16.0	-36.8	16.0	-43.6	16.0	-43.6	16.0	-38.5	16.0	-45.7	16.0	-45.7	16.0	-40.0	16.0	-47.4	16.0	-47.4
10	Gable/Hip Roof*** 7° < θ ≤ 27° (1.5 to 6:12)	21.8	-34.6	21.8	-60.2	21.8	-89.0	23.1	-36.8	23.1	-64.0	23.1	-94.6	24.3	-38.5	24.3	-67.1	24.3	-99.2	25.2	-40.0	25.2	-69.7	25.2	-103.0
20		19.9	-33.6	19.9	-55.4	19.9	-83.3	21.1	-35.7	21.1	-58.9	21.1	-88.5	22.1	-37.4	22.1	-61.7	22.1	-92.7	23.0	-38.9	23.0	-64.1	23.0	-96.3
50		17.3	-32.4	17.3	-49.0	17.3	-75.6	18.4	-34.4	18.4	-52.1	18.4	-80.3	19.3	-36.0	19.3	-54.6	19.3	-84.2	20.0	-37.4	20.0	-56.7	20.0	-87.5
100		16.0	-31.4	16.0	-44.2	16.0	-69.8	16.3	-33.3	16.3	-47.0	16.3	-74.2	17.1	-35.0	17.1	-49.2	17.1	-77.8	17.8	-36.3	17.8	-51.1	17.8	-80.8
10	Gable Roof 27° < θ ≤ 45° (6 to 12:12)	34.6	-37.8	34.6	-44.2	34.6	-44.2	36.8	-40.2	36.8	-47.0	36.8	-47.0	38.5	-42.1	38.5	-49.2	38.5	-49.2	40.0	-43.7	40.0	-51.1	40.0	-51.1
20		33.6	-35.9	33.6	-42.3	33.6	-42.3	35.7	-38.1	35.7	-44.9	35.7	-44.9	37.4	-39.9	37.4	-47.1	37.4	-47.1	38.9	-41.5	38.9	-48.9	38.9	-48.9
50		32.4	-33.3	32.4	-39.7	32.4	-39.7	34.4	-35.4	34.4	-42.2	34.4	-42.2	36.0	-37.1	36.0	-44.2	36.0	-44.2	37.4	-38.6	37.4	-46.0	37.4	-46.0
100		31.4	-31.4	31.4	-37.8	31.4	-37.8	33.3	-33.3	33.3	-40.2	33.3	-40.2	35.0	-35.0	35.0	-42.1	35.0	-42.1	36.3	-36.3	36.3	-43.7	36.3	-43.7

*** For Hip Roofs with angle > 7 degrees (1.5:12) and ≤ 25 degrees (5.5:12), Zone 3 shall be treated as Zone 2 (Figure 30.4-2B, Note 7, p. 337)

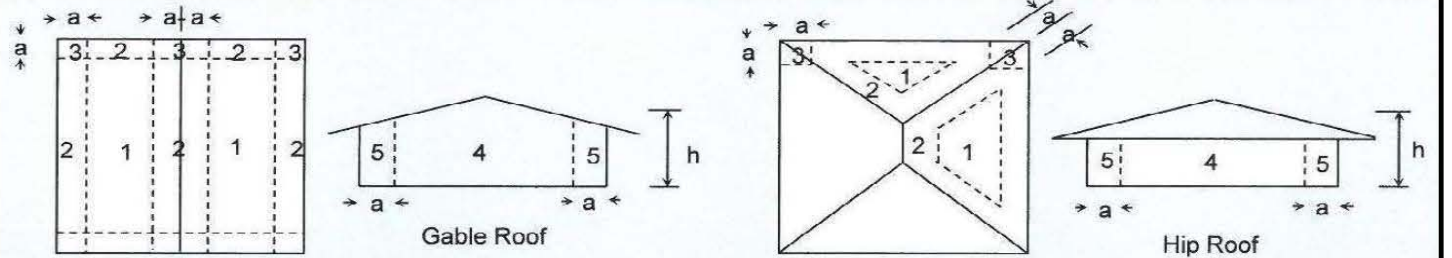
Effective Wind Area (ft ²)	Location	Mean Roof Height of 15 feet				Mean Roof Height of 20 feet				Mean Roof Height of 25 feet				Mean Roof Height of 30 feet			
		Zone				Zone				Zone				Zone			
		4		5		4		5		4		5		4		5	
		+	-	+	-	+	-	+	-	+	-	+	-	+	-	+	-
10	Wall	37.8	-41.0	37.8	-50.6	40.2	-43.6	40.2	-53.8	42.1	-45.7	42.1	-56.4	43.7	-47.4	43.7	-58.6
20		36.1	-39.3	36.1	-47.2	38.3	-41.7	38.3	-50.1	40.2	-43.8	40.2	-52.6	41.8	-45.5	41.8	-54.6
50		33.8	-37.0	33.8	-42.7	36.0	-39.4	36.0	-45.4	37.7	-41.3	37.7	-47.5	39.2	-42.9	39.2	-49.4
100		32.1	-35.3	32.1	-39.3	34.1	-37.5	34.1	-41.7	35.8	-39.4	35.8	-43.8	37.2	-40.9	37.2	-45.5
500		28.2	-31.4	28.2	-31.4	29.9	-33.3	29.9	-33.3	31.4	-35.0	31.4	-35.0	32.6	-36.3	32.6	-36.3

Garage Door Wind Loads

for a Building with 30-foot Mean Roof Height

Exposure C

Tables 1609.7(1) & (2), and Section 1609.3.1



For Effective Wind Areas between those given, values may be interpolated. Otherwise use the value associated with the lower Effective Wind Area.

End Zone (a) shall be the smaller of 10% of Least Hor. Dist. or 40% of Mean Roof Height ('h'), but not less than 4% of Least Hor. Dist. or 3 ft.

Identify the zone per the figure or information by others. Any questionable zone is to be considered the more critical zone.

Effective Wind Area		Roof Angle	Wind Load	
Width	Height		+	-
8	8	0 - 10 degrees	35.2	-39.8
10	10		34.1	-38.2
14	14		32.3	-36.1
9	7	> 10 degrees	38.4	-43.4
16	7		36.8	-41.0

Design is based on the 3-second gust (wind velocity) for Risk Category II (general residential & commercial construction) per FBC 1620.2 Broward. These tables not for use with essential facilities or assembly occupancies.